

TEXPRO®

MFH PLUS 高温匀流染色机
MFH PLUS LIQUID FLOW DYEING MACHINE

MFH PLUS 高温匀流染色机

MFH PLUS UNIFORM FLOW DYEING MACHINE

MFH PLUS 染色机是三技精密技术开发的新一代高温匀流染色机。大角度斜轴下沉渐扩式摆布技术有效提高单管载布量的同时，下沉式导布管使织物得到充分的回缩，织物内应力得到较大程度的释放。渐扩式变截面导布管利用水流特性，对织物进行纬向扩展，其后方的斜轴摆布，使织物在导布管中往复不断的改变状态，形成一种良好解扭的效果，降低折痕产生的机率，保证了染色织物的高品质。

MFH Plus Series HT Dyeing machine is a new generation of high temperature liquid flow dyeing machine developed by Texpro, integrating the latest research results. It's unique, patented design of the fabric delivery tube and plaiting system ensures lowest fabric elongation and prevents crease marks actively for superior dyeing results and best fabric appearance.

With this technology, MFH PLUS-Series HT dyeing machines have very high versatility to process a broad range of fabrics with lowest operational cost and excellent fabric quality.

MFH PLUS	1T	2T	3T	4T	6T
喷嘴数量 Number Of Nozzles	1	2	3	4	6
载量 Capacity (kg)	300-350	600-700	900-1050	1200-1400	1800-2100
尺寸 Size 长L*宽W*高H(mm)	3850*5750*3750	5540*5950*3750	6950*6080*3750	8600*6100*3750	11700*6500*3750

MFH M	30	50	75	100	150
载量 Capacity (kg)	20-30	40-50	60-75	75-100	120-150
尺寸 Size 长L*宽W*高H(mm)	1980*3490*2880	1980*3490*2880	2240*3200*2880	2340*3990*3190	2980*4385*3130



如有需求特殊载量，详情请咨询我司营业顾问

If any special request for loading capacity, please contact our sales team for details.

缸体和染料直接接触的不锈钢板材均采用 S31603/SUS316L/SUS316Ti 高度抗腐蚀不锈钢制造。

All stainless steel plates in touch with the dyeing liquid in the machine body are made of S31603 / SUS316L / SUS316Ti highly corrosion resistant stainless steel.

设备特点

SALIENT FEATURE



专利设计的大角度斜轴下沉渐扩式摆布技术

Patented fabric delivery tube design, enabling relaxation of fabric before plaiting into the main kier and reducing crease marks and rope twisting by improved opening of fabric. A broad range of fabrics can be effectively processed on MFH-Series HT Dyeing machine successfully, without compromising quality or operating cost.



中小样匀流染色解决方案

Wide angle plaiter with swinging movement for utilisation of maximum space in kier to optimise the loading capacity of the chamber. In combination with the patented fabric delivery pipe.

布料类型

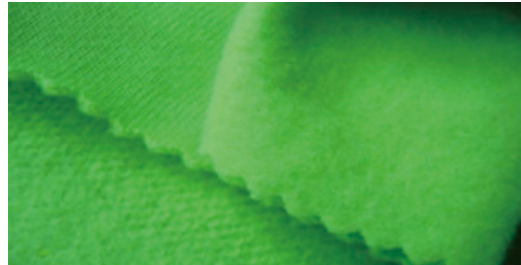
FABRIC TYPES

在特定的行机条件下，部分典型的适染布种

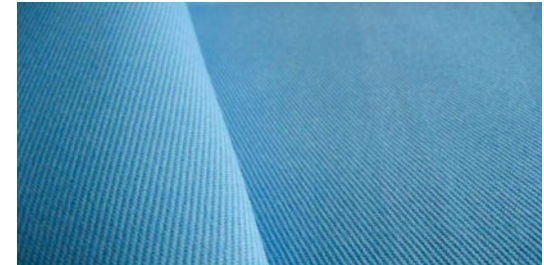
The MFH Plus is suitable for a wide range of knitted and woven fabrics. Due to its high versatility, it is particularly recommended for synthetic or cellulose fiber blends in knitted and warp-knitted fabrics.



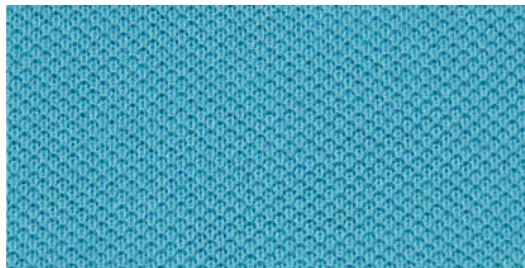
经编泳衣布 Wap Knit Nylon Fabric



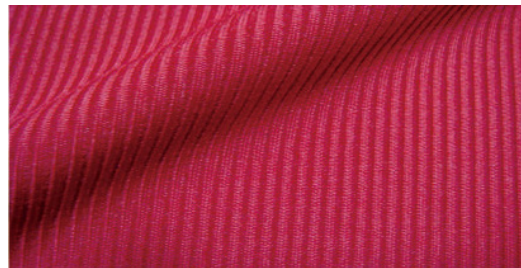
卫衣布 French Terry Fabric



双面布 Interlock Fabric



珠地布 Pique Fabric



罗纹布 Rib Fabric



平纹布 Jersey Fabric

以上参数仅供参考

Above information is a selection of fabrics suitable for processing on MFH Plus uniform flow dyeing machine. This selection is for reference only. Please contact our representative for a comprehensive list of fabrics.

本说明书中参数、图片仅供参考，本公司保留最终的修改权利而不再另行通知。

The parameters & pictures shown in this catalogue are only for your reference. We reserve the right to modify technologies without prior notice.

电话 (Tel): +86 757 8802 0263 / +86 757 8830 3380

邮箱 (E-mail): sales@texpro-group.com

网站 (Web): www.texpro-group.com



三技精密技术 (广东) 股份有限公司

TEXPRO PRECISION TECHNOLOGY (GUANGDONG) CO., LTD

地址 : 广东省佛山市禅城区华宝南路 1 号

Add: No.1, South Huabao Road, Chancheng District, Foshan,
Guangdong, China.

广东三技克朗茨机械科技有限公司

TEXPRO & STENTEX MACHINERY TECHNOLOGY CO., LTD.

地址 : 广东省佛山市三水区中心科技工业区大塘园 A 区 69-2 号

Add: No.69-2, Area A, Datang Park, Central Technology Industrial
Zone, Sanshui District, Foshan, Guangdong, China.